

Beads



#108G - 6mm Gold Filled Corrugated Beads - \$67.00 for 60 beads



#108S - 6mm Sterling Silver Corrugated Beads - \$35.50 for 60 beads

#109 8mm Carved Agate Rosebud Beads - Pink - \$6.95 for 60 beads



#110 8mm Agate Beads - Ivory, Blue, Lilac, Green, Pink, Amber, Tortoise, Turquoise, Coral - \$4.25 for 60 beads



#113 6x4mm Rice Beads With Star, \$3.00 for 60 beads colors: Lt. Sapphire, Emerald, Crystal, Cobalt Blue, Ruby, Garnet



#115 8mm Fire Polished Beads, \$6.75 for 60 beads - Brown Genuine Stone, Blue Turquoise, Green Turquoise, Garnet



#116 Plastic 8mm Round Plastic Beads (#15 eye pins) - primarily used to make mission rosaries - sold in thousands only - Red, Sapphire, White, Black - \$4.50/1000



#117 8mm Engraved Saturn Beads (#14 eye pins) - Jet, Aqua, Ruby, Lt. Amethyst, Garnet, Crystal - \$4.00/60



#118 - 8mm Round with Inlay Flower on colored Moonstone Beads (#15 eye pins) - Jet, Pink, White, Aqua, Dark Rose - \$81.50/60



#119 - 8mm Two-Tone Full Coated Glass Beads (#15 eye pins) - Purple/Green, Blue/Green, Brown/Clear - \$7.20/60



#120 - 7mm Frosted Beads (#14 eye pins) - Black, Lt. Sapphire, Pink, Crystal - \$4.00/60



#122 - 8mm Diamond Shape Pearl Beads (#15 eye pins) - Bronze, Gold, Hematite, Pink, - \$4.25/60



#126 Austrian Sunburst 6mm Swarovski Crystal Beads (use #13 eye pins) Garnet, Amethyst, Aqua, Crystal, Emerald, Alexandrite, Ruby, Crysolite, Sapphire, Rose, Topaz, Blue Zircon - \$22.00 for 60 beads



#127 - 7mm Austrian Swarovski Sunburst Beads (#14 eye pins) - Garnet, Amethyst, Aquamarine, Crystal, Emerald, Alexandrite, Ruby, Crysolite, Sapphire, Rose, Topaz, Lt. Sapphire, Fuchsia, Jet - \$26.50/60

Also available #133 with Aurora Borealis plating - 7mm. Same colors as #127 - \$30.00/60



#128 - Swarovski Sunburst Beads - 8mm use No. 15 eye pins - Rose, Lt. Sapphire, Topaz, Sapphire, Ruby, Emerald, Crystal, Aqua, Amethyst, Garnet - \$31.00 for 60 beads



#128P - Premium colors of #128 - Cobalt Blue, Dark Topaz, Blue Zircon, Violet, Dark Purple, Mint, Alabaster, Rose Water Opal, Dark Red Coral - \$38.00 for 60 beads



#130 - Austrian Sunburst Diamond Cut 6mm Swarovski Crystal Beads (use #13 eye pins) Blue Zircon, Topaz, Rose, Sapphire, Crysolite, Ruby, Alexandrite, Emerald, Crystal, Aqua, Amethyst, Garnet - \$12.00 for 60 beads



#129 - 7 x 8mm Pyramid Swarovski Aurora Borealis Beads - Crystal only - \$28.90/60



#131 - 5mm Austrian Swarovski Aurora Borealis Beads (#12 eye pins) - Jet, Lt. Sapphire, Topaz, Emerald, Crystal, Amethyst, Garnet - \$20.00/60



#132 - 6mm round Swarovski beads, Crystal only - \$21.00/60



#134 - 7 x 8mm Pyramid Swarovski Aurora Borealis Beads - Crystal only - \$30.90/60



#135 - 8mm Round Swarovski Aurora Borealis Beads - Crystal only - \$32.75/60



#136 - 6mm Pearl Smooth Round Beads - Violet, Cocoa Pearl, Burgundy, Silver Pearl, Hematite, Bronze, Pink, Aqua, White, Sapphire, Fuchsia - \$3.25/60



#137 - 8mm Pearl Smooth Round Beads - Fuchsia, Sapphire, White, Aqua, Pink, Bronze, Hematite, Silver Pearl, Burgundy, Cocoa Pearl, Violet - \$4.00/60



#138 - 8mm Cracked Beads, Smooth Round Czech Glass (#15 eye pins) - Jonquil, Topaz, Two Tone Topaz, Aqua, Blue/Green, Emerald, Amethyst, Rose, Crystal, Ruby, Sapphire - \$6.00/60



#139 - 6mm Cracked Beads Smooth Round Czech Glass, use eye pin size #13 - Sapphire, Ruby, Crystal, Rose, Amethyst, Emerald - \$5.00/60



#143 - 7mm Carved Coco Beads - Made from a natural growth in the root of a tropical tree. (#14 eye pins) - Black, Brown - \$8.40/60



#146 - 6mm Mother of Pearl Beads (#13 eye pins) - \$9.00/60



#147 - 7mm Mother of Pearl Beads (#14 eye pins) - \$14.00/60



#148 - 8mm Mother of Pearl Beads (#15 eye pins) - \$16.00/60



#149 - 8x8mm Heart Shaped Pearl Beads (#14 eye pins) - White, Pink, Gold, Silver - \$4.80/60



#152 - 8 1/2 mm Rosebud Beads Metallic Plated (#15 eye pins) - Florentine, Antique Silver, Gold - \$3.50/60

QUANTITY DISCOUNT

A dozen packages (720 beads) of any of the above at eleven times the price of a single package. Size and style must be the same, but you may have assorted colors if you prefer.

Beads



#153 - 8x8mm Heart Shaped Glass Beads (#14 eye pins) - Jet, Sapphire, Amethyst, Crystal AB, Garnet, Blue, Green, Pink, Clear, Red - \$3.25/60



#154 - Metallic Mushroom Beads (#15 eye pins) - Antique Gold, Antique Silver - \$5.00/60



#155 - 8mm Round Metallic Beads (#15 eye pins) - Bright Silver, Gold - \$4.00/60



#156 - 8mm Glass Bead with Foil Center (use #15 eye pins) - Amethyst - \$48.00/60



#157 - 8mm Miracle Beads (use #15 eye pins) - Royal, Bronze, Green, Peach, Ice Blue - \$19.25/60



#158 - 6mm Fire Polished Opaque Beads (#13 eye pins) - Opal Yellow, Opal Green, Opal Beige, Opal Blue - \$5.00/60



#161 - 5mm Round Glass Faceted Fire-Polished Beads (#12 eye pins) - Crystal, Aqua, Jet, Rose - \$2.25/60



#162 - 6mm Round Glass Faceted Fire-Polished Beads (#13 eye pins) - Hematite, Chocolate, Crystal, Aqua, Jet, Rose, Sapphire, Ruby, Deep Violet, Emerald - \$2.65/60



#163 - 7mm Round Glass Faceted Fire-Polished Beads (#14 eye pins) - Crystal AB, Ruby, Amethyst, Lt. Sapphire, Topaz, Cobalt Blue, Rose, Jet, Aqua, Crystal, Emerald - \$4.00/60



#163A - 7mm Round Glass Faceted Fire-Polished Beads (#14 eye pins) - Crystal AB - \$4.00/60



#164 - 8mm Round glass Faceted Fire-Polished Beads (#15 eye pins) - Chocolate, Hematite, Shiny Gold, Smoke, Champagne, Jet, Tanzanite, Crystal/Ruby, Jonquil, Hot Pink, Cobalt Blue, Lt. Sapphire, Topaz, Rose, Sapphire, Peridot, Ruby, Alexandrite, Emerald, Crystal, Aqua, Amethyst, Garnet, - \$4.50/60



#165 - 5x7mm Oval Glass Faceted Fire-Polished Beads (#14 eye pins) - Crystal, Sapphire, Rose, Jet, Amethyst, Ruby, Lt. Sapphire, Crystal AB - \$5.50/60



#167 - 5x7mm Oval Coco Beads with 7mm Carved Our Fathers (#14 eye pins) - Black, Brown - \$8.40/60



#168 8mm Pyramid Glass Fire Polished Beads (#15 eye pins) - Aqua, Lt. Amethyst, Crystal, Sapphire, Ruby, Rose - \$17.25/60



#169 - 8mm Fire Polished Diamond Shape Beads (#15 eye pins) - Jet, Sapphire, Rose, Emerald, Crystal, Ruby - \$6.50 for 60 beads



#173 - 7mm Luster-Lite Beads - Our Most Popular Bead. Made of an indestructible iridescent plastic with a secondary reflection similar to that of an opal (#14 eye pins) - Amethyst, Emerald, Topaz, Light Sapphire, Sapphire, Aqua, Black, White, Rose - \$6.75/60



#176 - 8mm Faceted Glass Picasso Beads (use #15 eye pins) - Jet, Aqua, Garnet, Amethyst, Lt. Sapphire - \$10.75/60



#177 - 6x8mm Flat Glass Smooth Oval Beads (use #15 eye pins) - Tortoise, Siam (Garnet), Crystal, Amethyst, Cobalt - \$3.00/60



#178 - 8mm Semi Precious Round Stone Beads (use #15 eye pins) - Snowflake, Red Jasper, Malachite, Leopard, Honey, Fancy Jade Jasper, Riverstone, Howlite Lapis, Rose Quartz, Red Obsidian, Aventurine, Turquoise Matrix, Azurite - \$9.00/60 beads. Malachite - Call for price



#179 - 8mm Genuine Stone Look Beads (#15 eye pins) - Stone, Grey, Brick, Lt. Green, Jet - \$5.50/60



#185 - Shamrock Beads - Green Oval Beads with one Shamrock embedded on each side, very popular for making Irish rosaries (#16 eye pins) - \$9.50/60



#186 - 6mm Fire Polished Beads (use #13 eye pins) - Peridot - \$3.00/60



#188 - Luminous Beads - these beads will glow in the dark (#19 eye pins) - \$7.00/60



#189 - 6mm Glass Beads with Petina Pearl Look (use #13 eye pins) - Salmon, Purple - \$5.00/60



#191 - 8mm Metalized Rosary Beads (#15 eye pins) - Antique Gold, Antique Silver - \$5.00/60



#193 - 8mm Metalized Rosary Beads (#15 eye pins) - Antique Gold, Antique Silver - \$4.25/60



#194 - Oval Metalized Rosary Beads (#16 eye pins) - Antique Silver - \$16.00/60



#195 - 8mm Glass Variegated Beads (#15 eye pins) - Purple, Smoke, Rose - \$7.00/60



#196 - 8mm Luster Series Beads (#15 eye pins) - Taupe, Blue, Purple, Rose, Green - \$7.50/60



#197 - 8mm Cat's Eye Beads (#15 eye pins) - White, Lt. Purple, Pink, Lt. Blue, Purple, Peach, Tanzanite, Sunshine, Royal - \$8.75/60

QUANTITY DISCOUNT

A dozen packages (720 beads) of any of the above at eleven times the price of a single package. Size and style must be the same, but you may have assorted colors if you prefer.



#198 - 8mm Swirl Beads (#15 eye pins) - Blue, Red - \$45.90/60



#199 - 8mm Smooth European Glass Beads (#15 eye pins) - Lapis Lazuli, Tourquoise Matrix, Coral Matrix - \$5.75/60



#209 - 8mm Round Wood Beads - Red, Brown, Natural - \$4.25/60



#210 - 8mm Gemstone Look Beads (#15 eye pins) - Granite, Jade, Turquoise, Rose Quartz, Lapis - \$24.00/60



#211 - 8mm Two-Tone Beads (#15 eye pins) - Jet, Madeira, Amethyst, Emerald, Sapphire, Garnet - \$10.50/60



#212 - 8mm Cloisonné Beads (#15 eye pins) - Gold, Blue, Red, Black - \$51.00/60



#213 - 10x9mm Cushion Cut Beads - Tortoise Shell, Siam, Olivine, Smoke Topaz, Sapphire - \$12.50/60



#214G - 8mm Gold Filigree Rhinestone Bead (#5015 eye pins) - Lt. Sapphire, Rose, Amethyst, Crystal, Emerald, Sapphire, Ruby - \$1.70 per bead



#214S - 8mm Silver Filigree Rhinestone Bead (#15 eye pins) - Lt. Sapphire, Rose, Amethyst, Ruby, Sapphire, Emerald, Crystal - \$1.60 per bead



#219 - Sterling Silver 7mm Smooth Round Beads (use #14 eye pins) - \$48.50/60



#221 - 8mm Saturn Beads (#15 eye pins) Topaz, Sapphire, Alexandrite, Emerald, Crystal, Ruby - \$4.00/60



#222 - 8mm Round Clear Glass Beads - Cobalt Blue, Topaz, Lt. Amethyst, Crystal - \$4.00/60



#223 - 8mm Opaque Stone Glass Beads (#15 eye pins) - Mauve, Cobalt Blue, Garnet, Emerald - \$6.00/60



#224 - 6mm Blood Red Fire Polished Beads (#13 eye pins) \$5.25/60



#225 - 8mm Blood Red Fire Polished Beads (#15 eye pins) \$9.90/60



#226 - 6mm Blood Red Smooth Round Beads (#13 eye pins) - \$3.50/60



#227 - 8mm Blood Red Smooth Round Beads (#15 eye pins) \$6.25/60



#228 - Hand crafted rose petal beads with caps - Red only - \$1.50 per bead



#3001 - Silver Filigree Rhinestone Fancy Oval Bead size: 12mm (#16 eye pins) - Priced per bead. Usually used for Our Father Beads - Ruby - \$2.80 per bead



#3002 - Gold Crown Picasso Beads size: 8mm (#5015 gold eye pins) - Pink, Emerald, Lt. Sapphire, Ruby - \$14.00/60



#3004 - 8x6 Fire Polish Olive Shaped Beads (#15 eye pins) - Pink, Crystal, Ruby, Sapphire - \$5.75/60



#3006 - Job's Tears Beads (#15 eye pins) - \$6.25/60



#3005 - 8mm Volcanic Beads (#15 eye pins) - Teal, Olive, Mustard, Dark Green, Red, Orange, Lt. Green - \$7.00/60



#3008 - Swarovski Sunburst Heart Beads size 8mm (#15 eye pins) Hole is side drilled. Rose, Crystal, Aqua, Amethyst, Garnet - \$35.50 for 60 beads



#3007 - 8mm Frosted Glass Faceted Beads (#15 eye pins) - Dk. Rose, Lt. Olive, Purple, Jonquil, Plum, Aqua, Lt. Rose, Lt. Blue, Crystal - \$6.50 for 60 beads

BIRTHSTONES FOR ROSARIES



We can supply a sample string (arranged in the proper sequence) of the twelve birthstone beads in 7mm size of the #133S Aurora Borealis for \$7.00 or in the 7mm #127S Sunburst for \$5.00.

Following are the accepted Birthstones for each month of the year.

January	Garnet	July	Ruby
February	Amethyst	August	Crysolite (Pale Green)
March	Aquamarine	September	Sapphire
April	Crystal	October	Rose
May	Emerald	November	Topaz
June	Alexandrite (Lavender)	December	Lt. Sapphire



Sterling Silver prices are fluctuating! Adjustments will be made as we restock inventory.

Beads

119 – 8mm Two Tone Fire Polished Glass Beads – (#15 eye pins) – Purple/Green, Blue/Green, Brown/Clear, Fuchsia/Violet, Garnet/Purple. \$7.20/60



136 – 6mm Pearl Smooth Round Glass Beads – (#13 eye pins) – Fuchsia, Sapphire, White, Aqua, Pink, Bronze, Hematite, Silver Pearl, Burgundy, Cocoa Pearl, Violet, Turquoise, Gold, Coral, Black, Lt. Sapphire, Hunter Green. \$3.25 for 60 beads



162 – 6 mm Round Glass Fire Polished Beads – (#13 eye pins) – Chocolate, Jet, Hematite, Deep Violet, Lt. Sapphire, Topaz, Rose, Sapphire, Peridot, Ruby, Alexandrite, Emerald, Crystal, Aqua, Amethyst, Garnet. \$2.65 for 60 beads, some colors more.



3010 – 8mm Glass Art Deco Beads (#15 eye pins) – Topaz, Aqua, Sapphire, Hyacinth. \$1.75 per bead

3011 – 8mm Glass Fancy Beads (#15 eye pins) – Blue/Green/Red, Red/White/Green, Lt Blue/White/Yellow, Lt Green/White. \$9.50/60



3012 – 8 x 8mm Faceted Glass Cube Beads (#15 eye pins) – Jet, Alexandrite, Emerald, Crystal, Aqua, Ruby. \$17.50 for 60 beads

3013 – 10mm Glass Fire Polished Twist Beads (#16 eye pins) – Rose, Sapphire, Emerald, Alexandrite \$14.00 for 60 beads



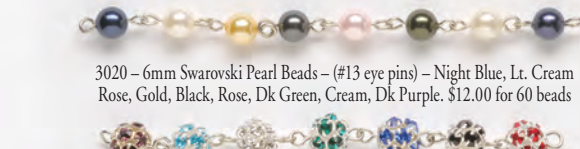
3015 – 8mm Genuine Gemstone Beads (#15 eye pins) – Amethyst, Coral Dolomite, Carnelian, Hematite, Tiger Eye, Black Onyx, Brown Goldstone, Rhyolite, Malachite, Blue Goldstone, Sodalite, Yellow Turquoise, Taiwan Jade, Mexican Crazy Lace, Jade Zing Ziang. See website for prices. See website for 6mm No. 3016.



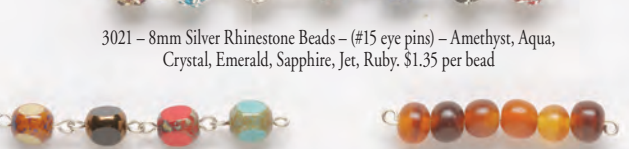
3017 – 8mm Striped Fire Polished Glass Beads – (#15 eye pins) – Pink, Blue/Gold, Lime, Giraffe. \$10.50 for 60 beads



3019 – 6mm Czech Machine Cut Round Crystal Beads (#13 eye pins) – Rose, Aqua, Crystal, Emerald, Amethyst, Ruby, Cobalt Blue. \$16.00 for 60 beads



3020 – 6mm Swarovski Pearl Beads – (#13 eye pins) – Night Blue, Lt. Cream Rose, Gold, Black, Rose, Dk Green, Cream, Dk Purple. \$12.00 for 60 beads



3021 – 8mm Silver Rhinestone Beads – (#15 eye pins) – Amethyst, Aqua, Crystal, Emerald, Sapphire, Jet, Ruby. \$1.35 per bead



3022 – 8mm 3-Cut Picasso Beads (#15 eye pins) – Ivory, Jet/Bronze, Blood Red, Green Turquoise. \$14.50 for 60 beads



3023 – 6mm Round Amber Horn Beads – (#13 eye pins) - \$5.25 for 60 beads



3024 – 6mm Silver Rhinestone Rondelles Emerald, Crystal, Ruby, Sapphire. \$5.25 per dozen



3025 – 10x7mm Tiger Biconal Kamagong Wood Beads – (#14 eye pins) - \$9.00 for 60 beads

3027 – 12mm Orbit Beads – (#5016 eye pins) – Amber, Navy, Paris Red, Green. \$15.75 for 60 beads



3034 – 8mm Round Silk Plastic Beads – (#15 eye pins) – Lilac, Lt Green, Tortoise, Matte Beige, Matte Brown, Matte Crystal \$4.50 for 60 beads



3035 – 8mm Antique Silver Metallic Beads (#15 eye pins) - \$22.00 for 60 beads



3036 – 8mm Matte Pearl Glass Beads (#15 eye pins) – Olive, Navy, Rose, Aqua, Lilac \$4.50 for 60 beads



3037 – 8mm Fire Polished Glass Pearlized Beads (#15 eye pins) – Lt Blue, Fuchsia, White, Rose, Aqua, Purple \$5.50 for 60 beads

3038 – 6mm Cat's Eye Beads (#13 eye pins) – Royal Blue, Dk Brown, White, Dk Purple, Emerald, Lt Blue. \$6.00 for 60 beads

3040 – 8mm Glass Opal Fire Polished Beads (#15 eye pins) – Mint, Pink, Olive, Sky Blue, Gray \$9.90 for 60 beads



3041 – 6mm Swarovski Rondelle Beads – (#12 eye pins) – Rose, Crystal, Sapphire, Ruby. \$12.00 for 60 beads



3042 – 16mm Glass Silver Foiled Beads with Colored Speckles – (#19 eye pins) – Crystal, Amethyst, Olivine. \$0.50 per bead



3043 – 8mm Quartz Beads – (#15 eye pins) – Rose, Cobalt, Lavender, Aventurine, Sky Blue, Amethyst, Garnet. \$8.50 for 60 beads



3044 Sterling Silver Pray Message Bead \$4.50 per bead



3045 – 8mm Gold, Silver, Copper Venetian Glass Foil Beads – (#15 eye pins) – Red, Sky Blue, Pink \$15.00 for 60 beads



214B – 8mm Black Filigree Rhinestone Beads (#15 eye pins) – Rose, Jet, Ruby, Crystal, Amethyst. \$1.70 per bead



3046 – 6mm round Palm Wood Beads – (#13 eye pins) \$4.00 for 60 beads

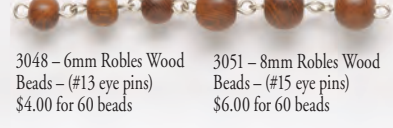


3049 – 8mm round Palm Wood Beads – (#15 eye pins) \$6.00 for 60 beads



3047 – 6mm Mahogany Wood Beads – (#13 eye pins) \$4.00 for 60 beads

3050 – 8mm Mahogany Wood Beads – (#15 eye pins) \$6.00 for 60 beads



3048 – 6mm Robles Wood Beads – (#13 eye pins) \$4.00 for 60 beads

3051 – 8mm Robles Wood Beads – (#15 eye pins) \$6.00 for 60 beads



3052 – 8mm Olivewood Beads – (#15 eye pins) \$12.00 for 60 beads